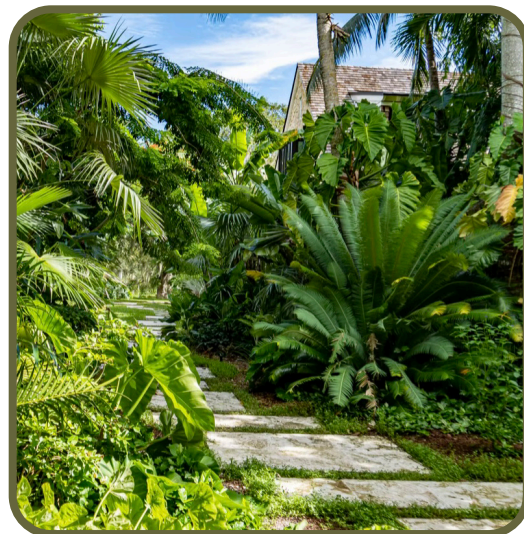
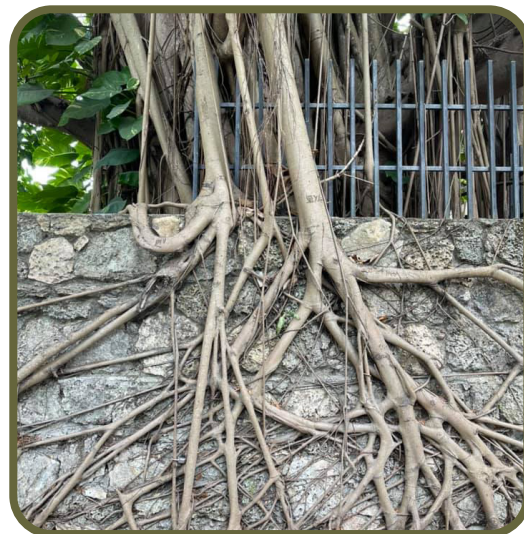
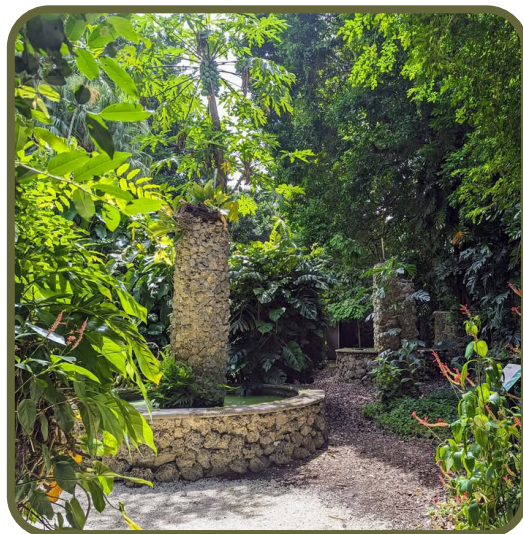
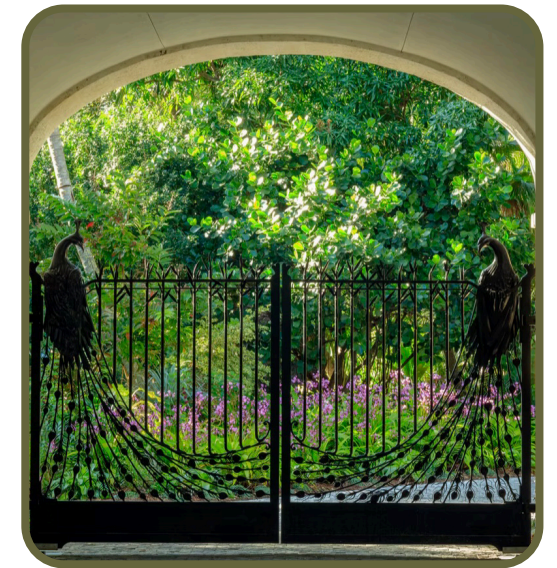


KIRK MUNROE PARK

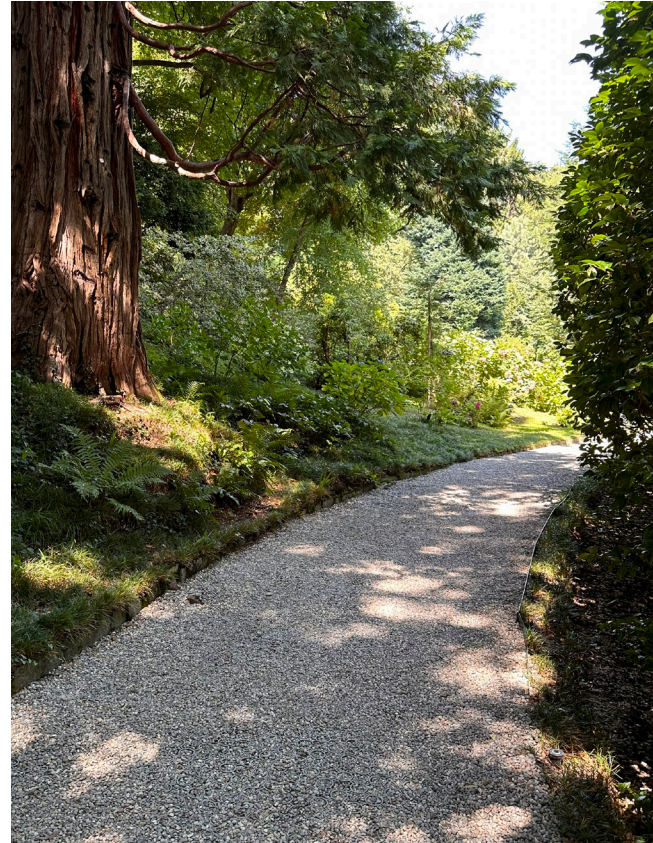
ENHANCEMENTS



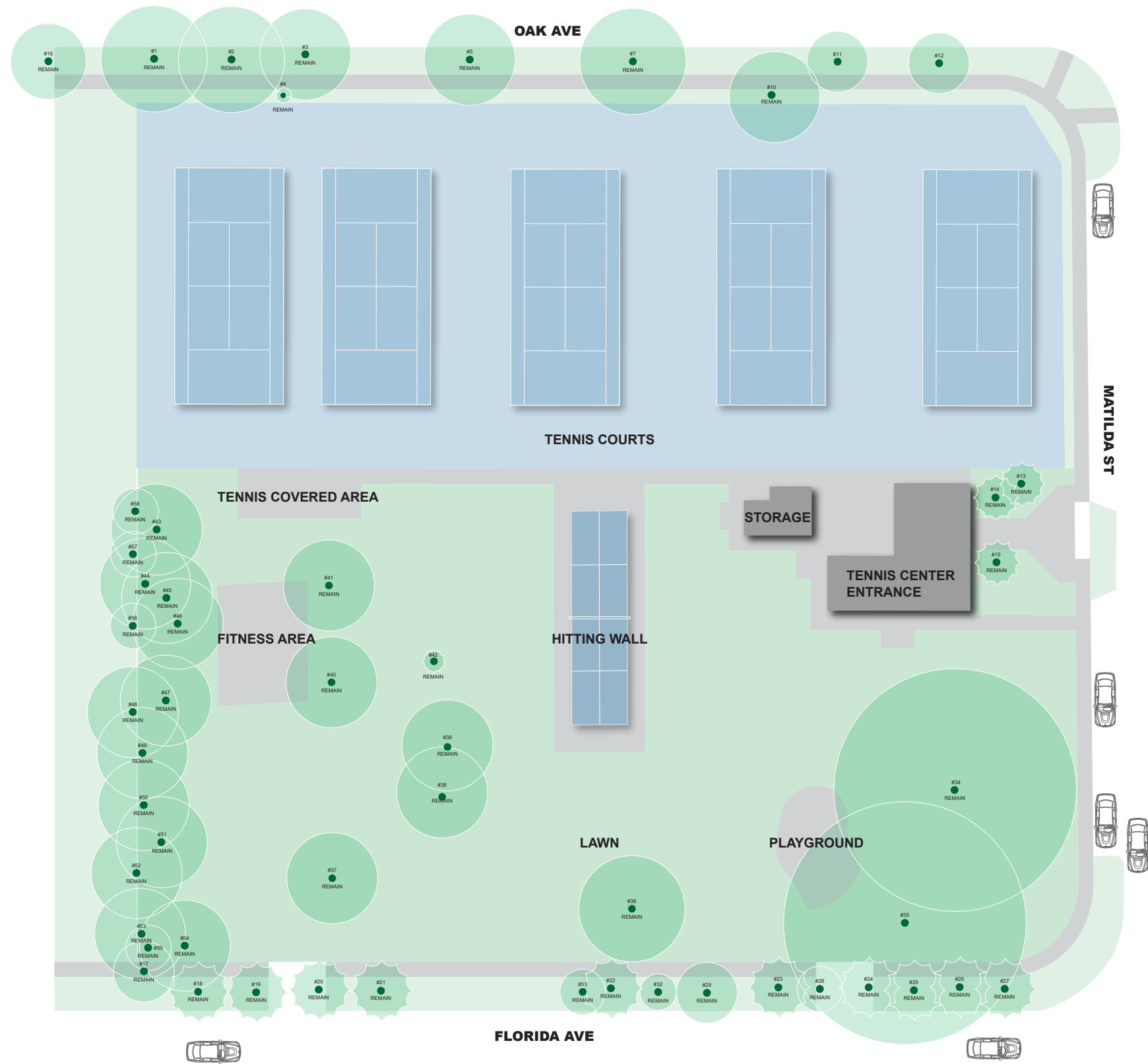
KIRK MUNROE PARK



KIRK MUNROE PARK



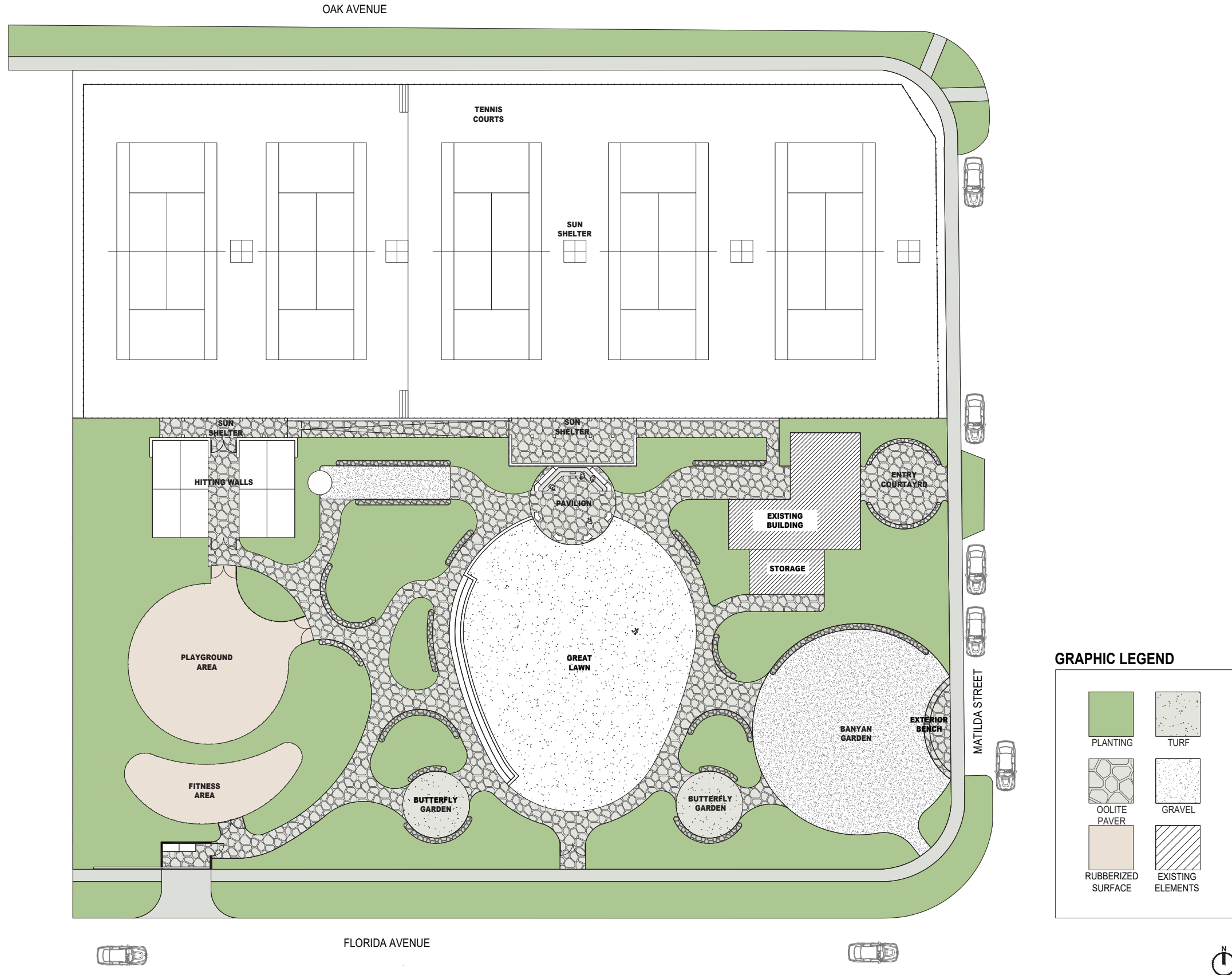
KIRK MUNROE PARK



EXISTING ELEMENTS



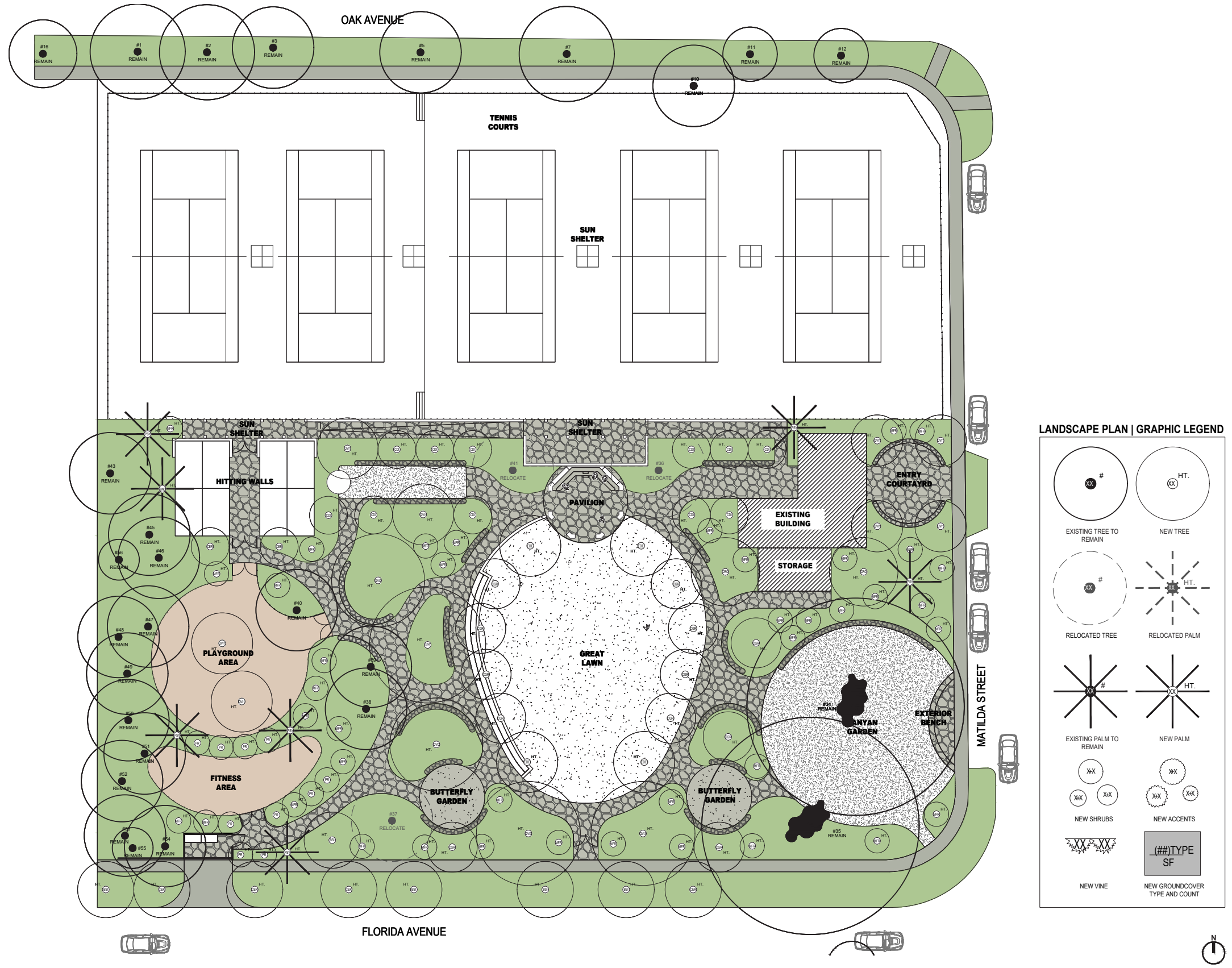
KIRK MUNROE PARK



GRAPHIC LEGEND

PLANTING	TURF
OOLITE PAVER	GRAVEL
RUBBERIZED SURFACE	EXISTING ELEMENTS

KIRK MUNROE PARK



KIRK MUNROE PARK

NATURALFICIAL, INC. KIRK MUNROE PARK PLANT LIST: 2026.05.21									
QTY	ABRV.	BOTANICAL NAME	COMMON NAME	SPECIFICATIONS	FL. NATIVE		DROUGHT TOLERANT		DBH
					YES	NO	YES	NO	
TREES: 8 R.O.W.									
4	BSI	<i>Bursera simaruba</i>	Gumbo Limbo	20' HT, 6" DBH, 12' SP	X		X		24"
4	CER	<i>Conocarpus Erectus</i>	Green Buttonwood	20' HT, 6" DBH, 12' SP	X		X		24"
TREES: 105 ON SITE									
1	BSI	<i>Bursera simaruba</i>	Gumbo Limbo	20' HT, 6" DBH, 12' SP	X		X		6"
21	CDI	<i>Coccoloba diversifolia</i>	Pigeon plum	15' HT, 6" DBH, 12' SP	X		X		90"
2	CER	<i>Conocarpus Erectus</i>	Green Buttonwood	20' HT, 4" DBH, 12' SP, 3 trk min.	X		X		24"
12	CGR	<i>Caesalpinia granadillo</i>	Bridalveil Tree	12'-15' HT, 4" DBH, 10' SP		X	X		48"
1	CPE	<i>Ceiba pentandra</i>	Kapok Tree	25'-30' HT, 18" DBH, 15' SP, field grown		X	X		18"
2	CRO	<i>Clusia rosea</i>	Autograph Tree	15'-20' HT, 8" DBH MIN. 10' SP, multi branch	X		X		16"
4	EDE	<i>Eucalyptus deglupta</i>	Rainbow Eucalyptus	20' Ht., 6" DBH		X	X		24"
41	MFR	<i>Myrcianthes fragrans</i>	Simpson Stopper	10' HT, 2" DBH, 6' SP	X		X		82"
9	PR	<i>Pimenta racemosa</i>	Bay Rum	10' HT, 4" DBH, 8' SP	X		X		36"
8	QVI1	<i>Quercus virginiana</i>	Live Oak	15' HT, 4" DBH, 15' SP, multi trunk, 3 trk min.	X		X		48"
2	QVI2	<i>Quercus virginiana</i>	Live Oak	20' HT, 12" DBH, 15' SP	X		X		24"
2	QVI3	<i>Quercus virginiana</i>	Live Oak	25' HT, 12" DBH, 15' SP	X		X		24"
PALMS: 7									2%
1	BNO	<i>Bismarckia Nobilis</i>	Bismarck Palm	20' HT, 12" DBH		X	X		6"
6	PSY	<i>Phoenix sylvestris</i>	Sylvestris / Wild Date Palm	25' HT, 12" DBH		X	X		36"
									TOTAL DBH
									530"
									488" for trees

KIRK MUNROE PARK



KIRK MUNROE PARK



KIRK MUNROE PARK



KIRK MUNROE PARK



KIRK MUNROE PARK



KIRK MUNROE PARK







KIRK MUNROE PARK



KIRK MUNROE PARK





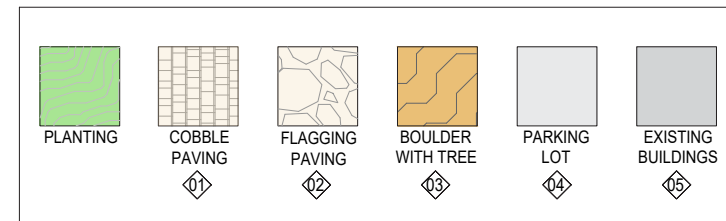
FULLER STREET

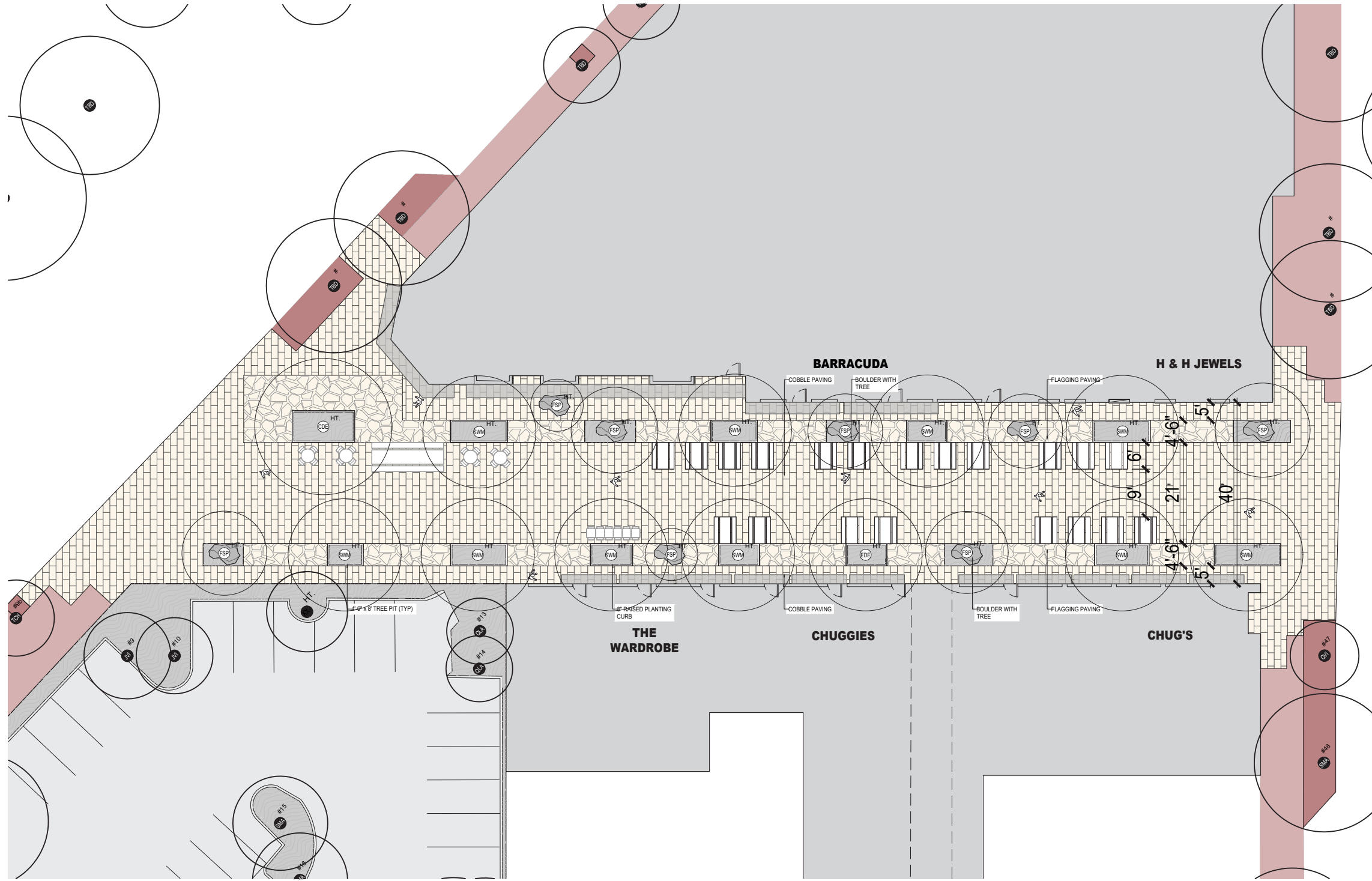
1. RE-GRADING OF ROAD INTO A CURBLESS CONDITION
2. NEW RE-ALIGNED TREE PITS TO WORK WITH STORE ENTRIES
3. NEW TREES WITH SUSPEND PAVNG SYSTEM FOR TREE HEALTH
4. NEW PAVING FINISHES
5. NEW GRADING
6. NEW IRRIGATION
7. NEW LIGHTING



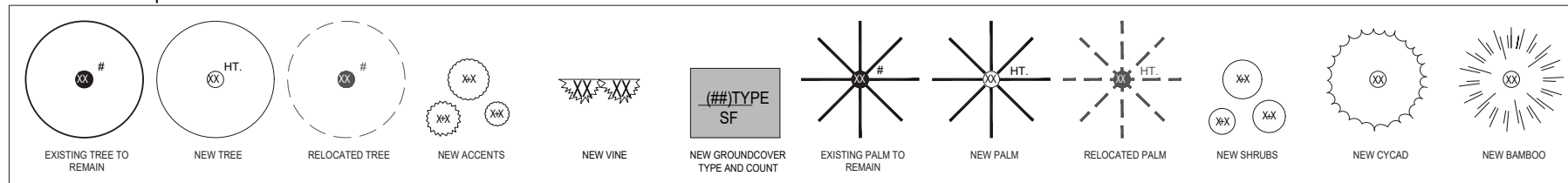


GRAPHIC LEGEND





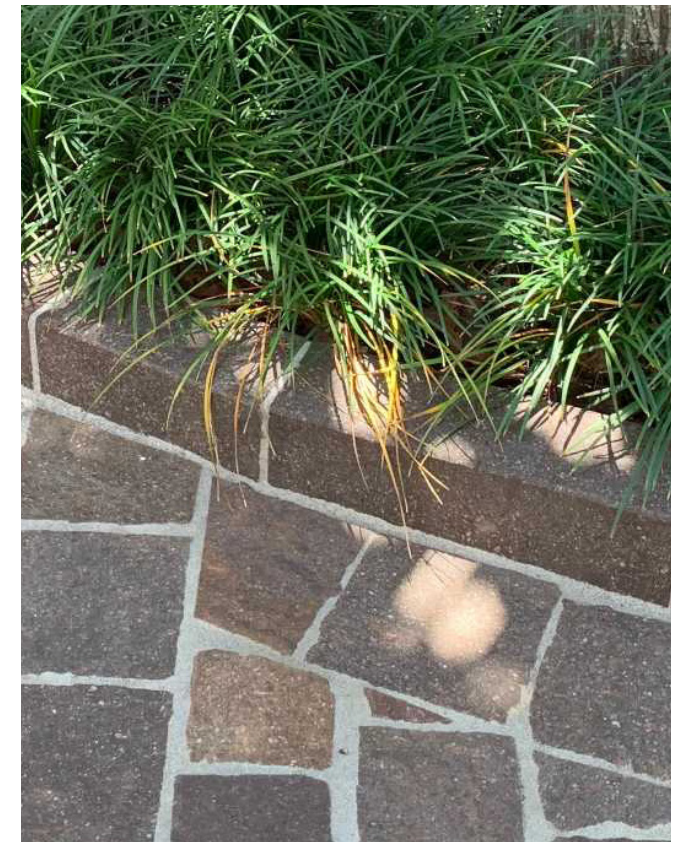
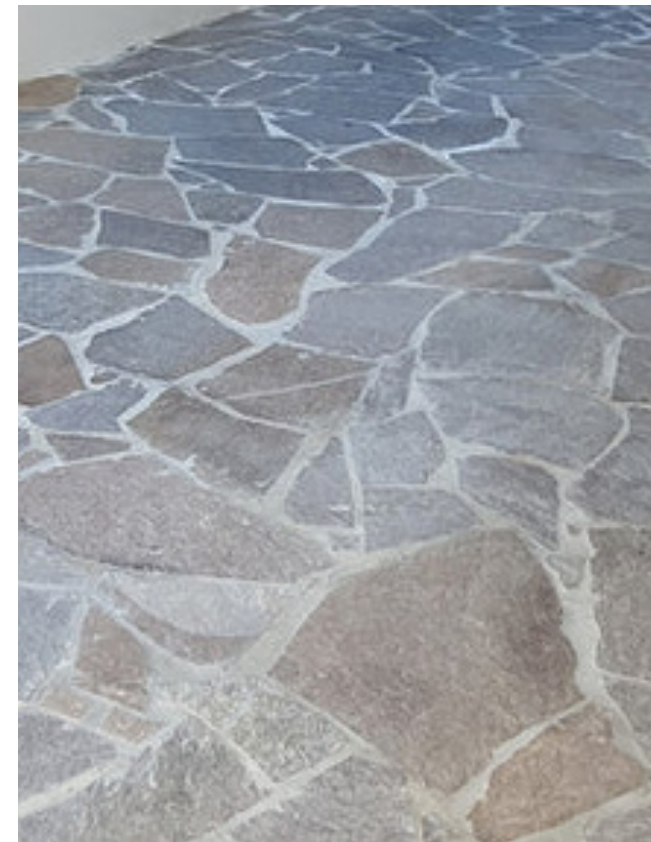
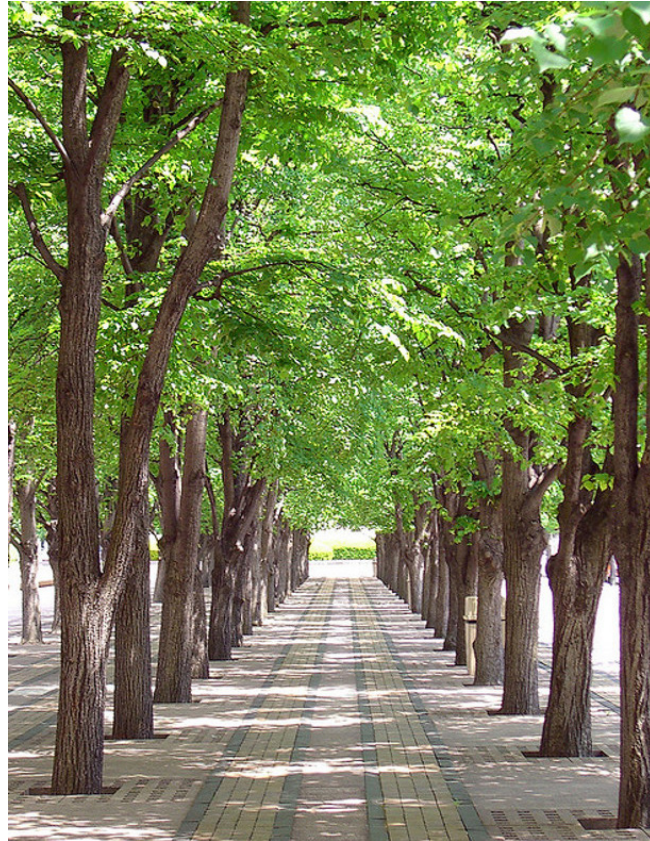
LANDSCAPE PLAN | GRAPHIC LEGEND



FULLER STREET

NATURALFICIAL, INC. FULLER STREET PLANT LIST: 2026.05.20								
QTY	ABRV.	BOTANICAL NAME	COMMON NAME	SPECIFICATIONS	FL. NATIVE		DROUGHT TOLERANT	
					YES	NO	YES	NO
TREES								
1	CDE	<i>Castanea dentata</i>	American Chestnut Tree	20'-25' Ht. Specimen		X	X	
1	EDE	<i>Eucalyptus deglupta</i>	Rainbow Eucalyptus	20' Ht., 6" DBH		X	X	
8	FSP	TBD	Ficus SP					
10	SWM	<i>Swietenia mahagoni</i>	Mahogany Tree	20'-25' Ht., 8" DBH	X		X	

FULLER STREET



FULLER STREET



FULLER STREET



FULLER STREET



FULLER STREET



THANK YOU!

